

# SCO Forum 2006

MOBILITY EVERYWHERE >



**SCO HA Cluster**  
**Rick Powell**  
**Senior Systems Engineer**

1



Platinum Sponsor



# Overview



- System requirements
- Install process
- Configuring the cluster



- Hardware
  - Two or more supported servers
  - At least 64MB RAM (recommended 256MB +)
  - At least one network card attached to public network
  - At least one interface used as a heartbeat between servers. Like a serial connection or second network interface.
  - Shared storage if data is going to be shared between the clusters

# System Requirements (cont)



## Operating Systems

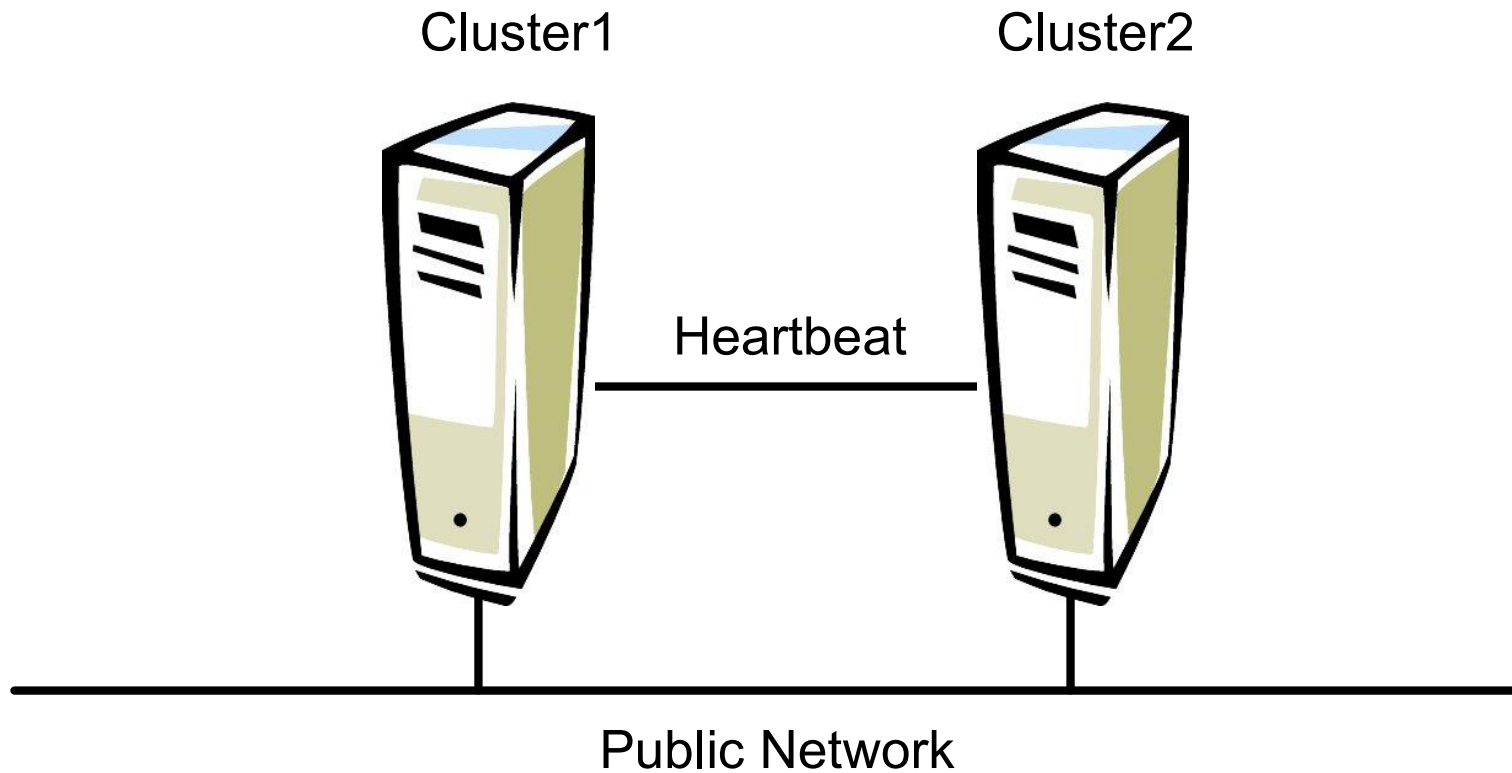


OpenServer 6.0 with:  
MP2 or later

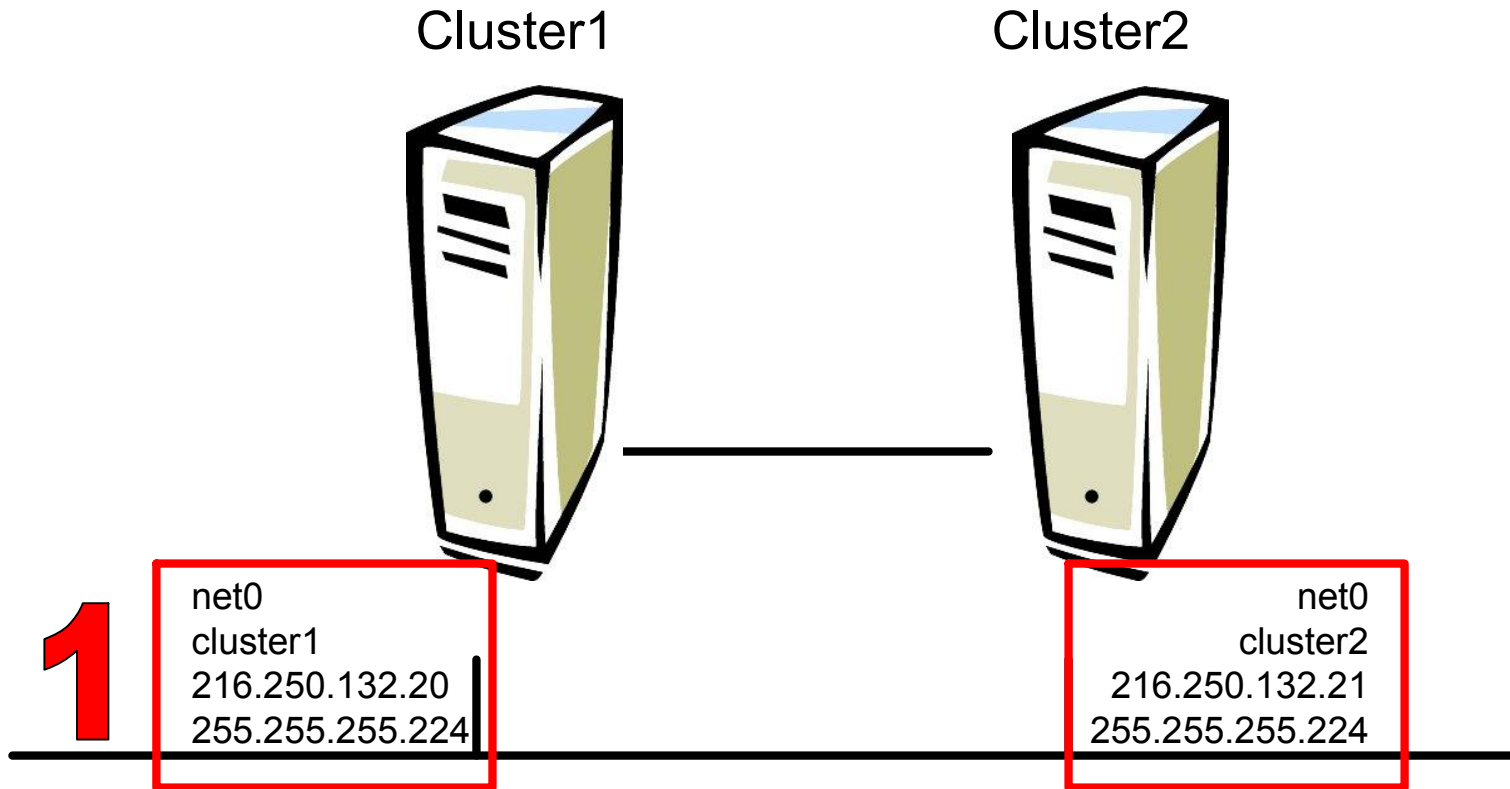


UNIXWARE 7.1.4 with:  
MP3 and ptf9052  
or later

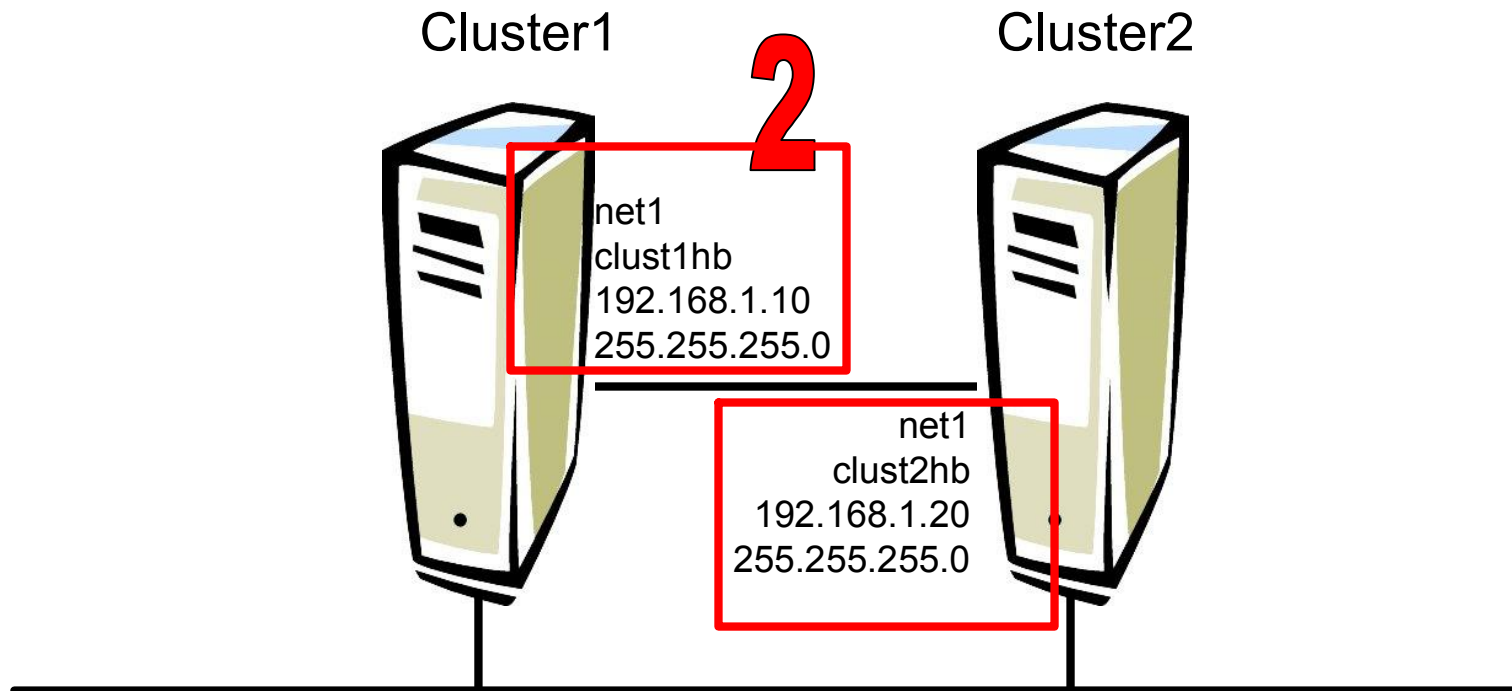
# Basic Cluster Configuration



# Network IP Address



# Heartbeat Network IP Addresses



# Alias IP Addresses

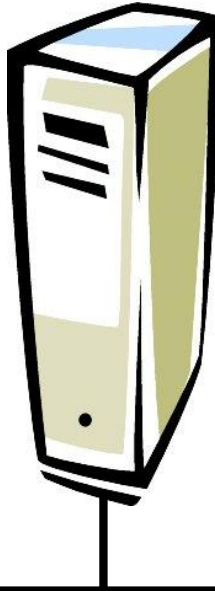


3

Cluster1

Cluster2

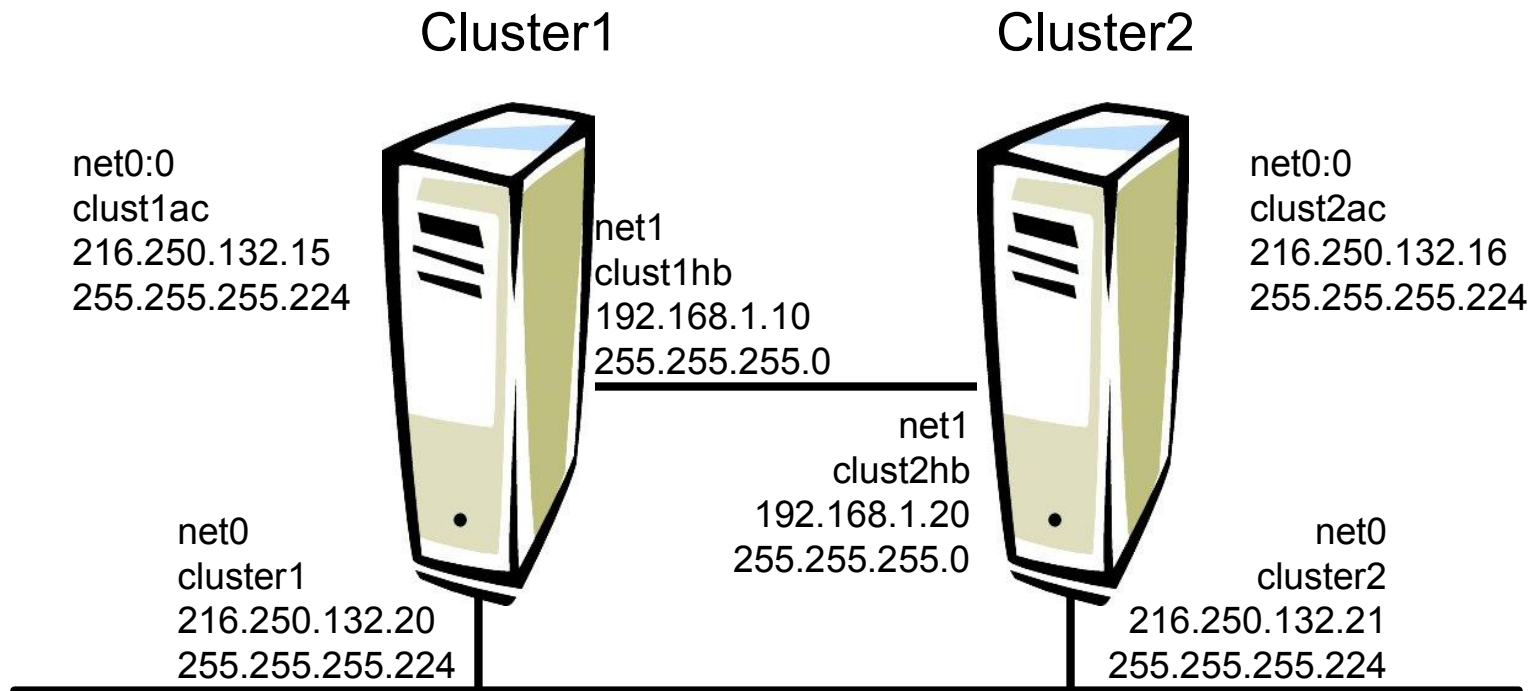
```
net0:0  
clust1ac  
216.250.132.15  
255.255.255.224
```



```
net0:0  
clust2ac  
216.250.132.16  
255.255.255.224
```



# Jobs IP Addresses



4

Jobs  
docview  
216.250.132.22  
255.255.255.224

# /etc/hosts file



```
xterm <3>
127.0.0.1    localhost
216.250.132.20 cluster1 cluster1.senet.sco.com
216.250.132.21 cluster2 cluster2.senet.sco.com
192.168.1.10 clust1hb
192.168.1.20 clust2hb
216.250.132.15 clust1ac
216.250.132.16 clust2ac
216.250.132.22 docview
~
~
~
~
~
~
~
~
~
~
~
~
~
~
~
~
~
~
~
~
~
~
```



# Installation



```
xterm  
cluster1: ls  
hacs_1.0.pkg  
cluster1: pkgadd -d /cluster/hacs_1.0.pkg █
```



```
X xterm
/usr/HA/ha_web/htdocs/images/pc_void.gif
/usr/HA/ha_web/htdocs/index.html
/usr/HA/ha_web/htdocs/invalid_login.html
/usr/HA/ha_web/htdocs/passwd_file_missing.html
/usr/HA/ha_web/htdocs/session_inuse.html
/usr/HA/ha_web/htdocs/session_timeout.html
/usr/HA/ha_web/htdocs/status.html
/usr/HA/ha_web/sessions/passwd
/usr/HA/ha_jgui/README_EXEC
/usr/HA/ha_jgui/ha_jgui.jar
/usr/HA/libha.a
[ verifying class <none> ]
/usr/HA/ha_web/htdocs/documentation.pdf <linked pathname>
## Executing postinstall script.
Setting up automatic startup...
Setting up remote GUI control...

Installation of HA Clusters (hacs) was successful.
cluster1: JAVA_HOME=/usr/java
cluster1: PATH=$PATH:$JAVA_HOME/jre/bin
cluster1: export JAVA_HOME PATH
cluster1: /usr/java/bin/java -jar /usr/HA/ha_jgui/ha_jgui.jar &
[1] 13937
cluster1: []
```



**H.A. Clusters Server Login**

Enter the address of the server you wish to configure.

Address:

User:

Password:



**H.A. Clusters Console**

File Help

**Target Node:**

**Target Job:**

**Message:**

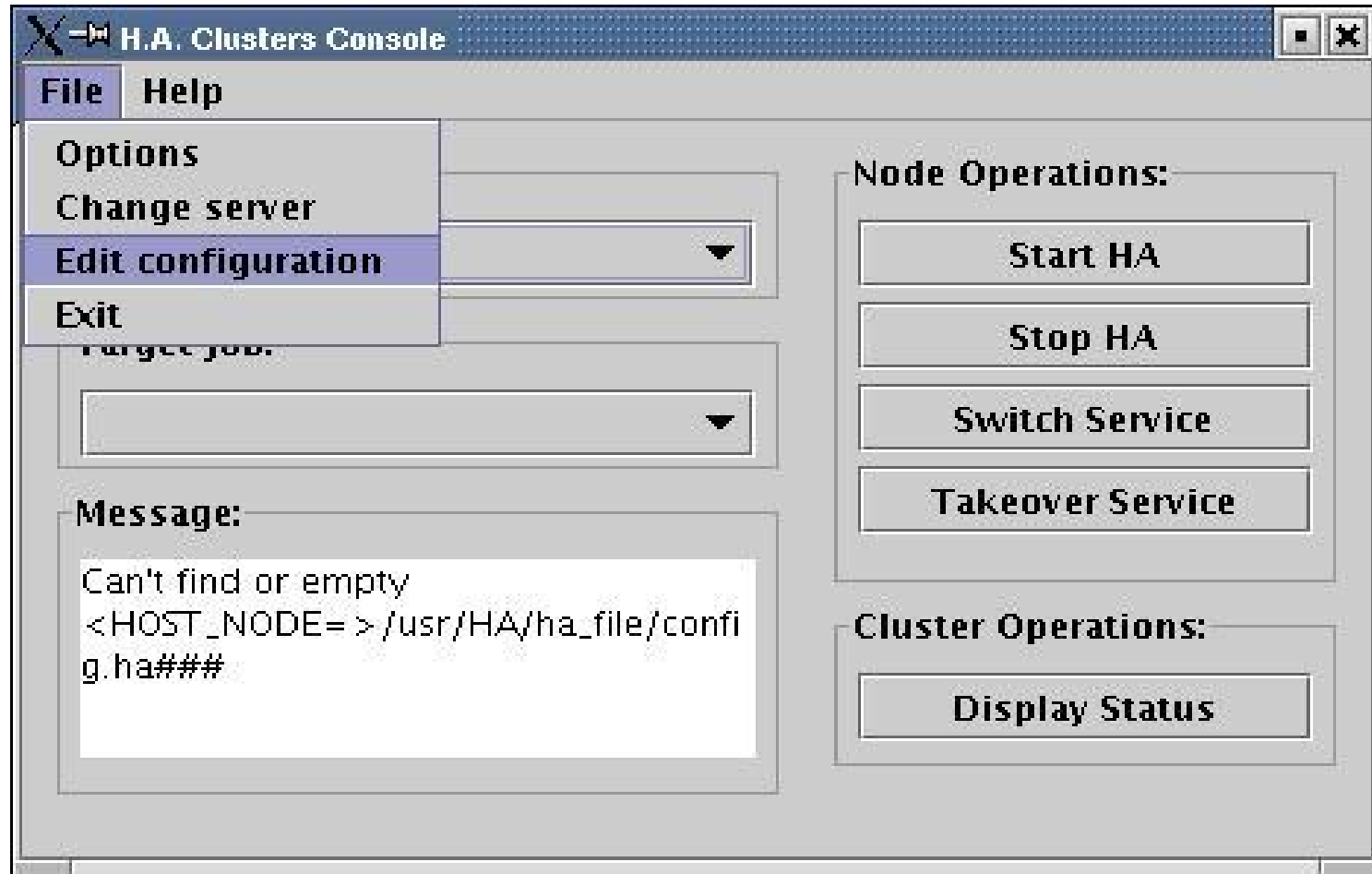
```
Can't find or empty  
<HOST_NODE= > /usr/HA/ha_file/config.ha###
```

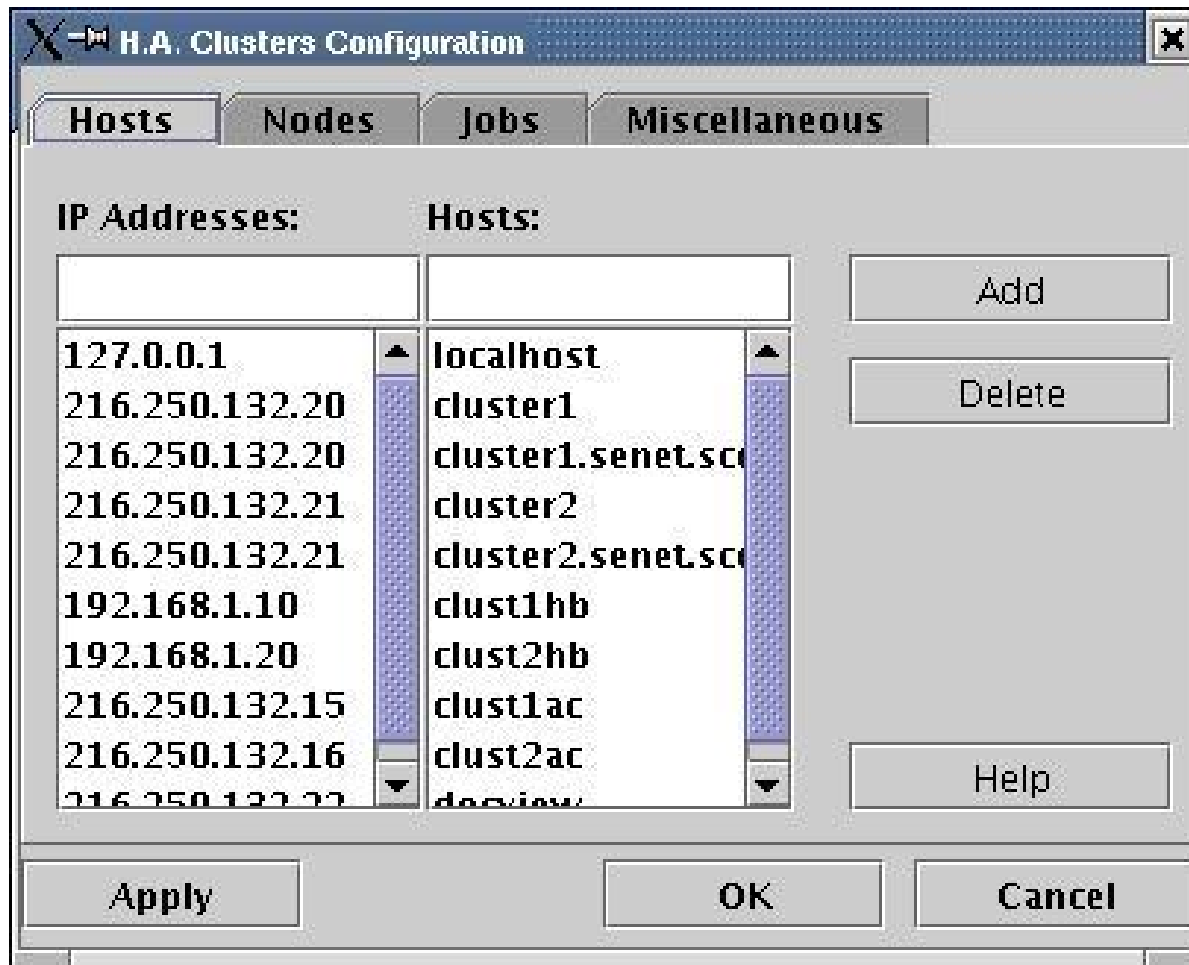
**Node Operations:**

- Start HA
- Stop HA
- Switch Service
- Takeover Service

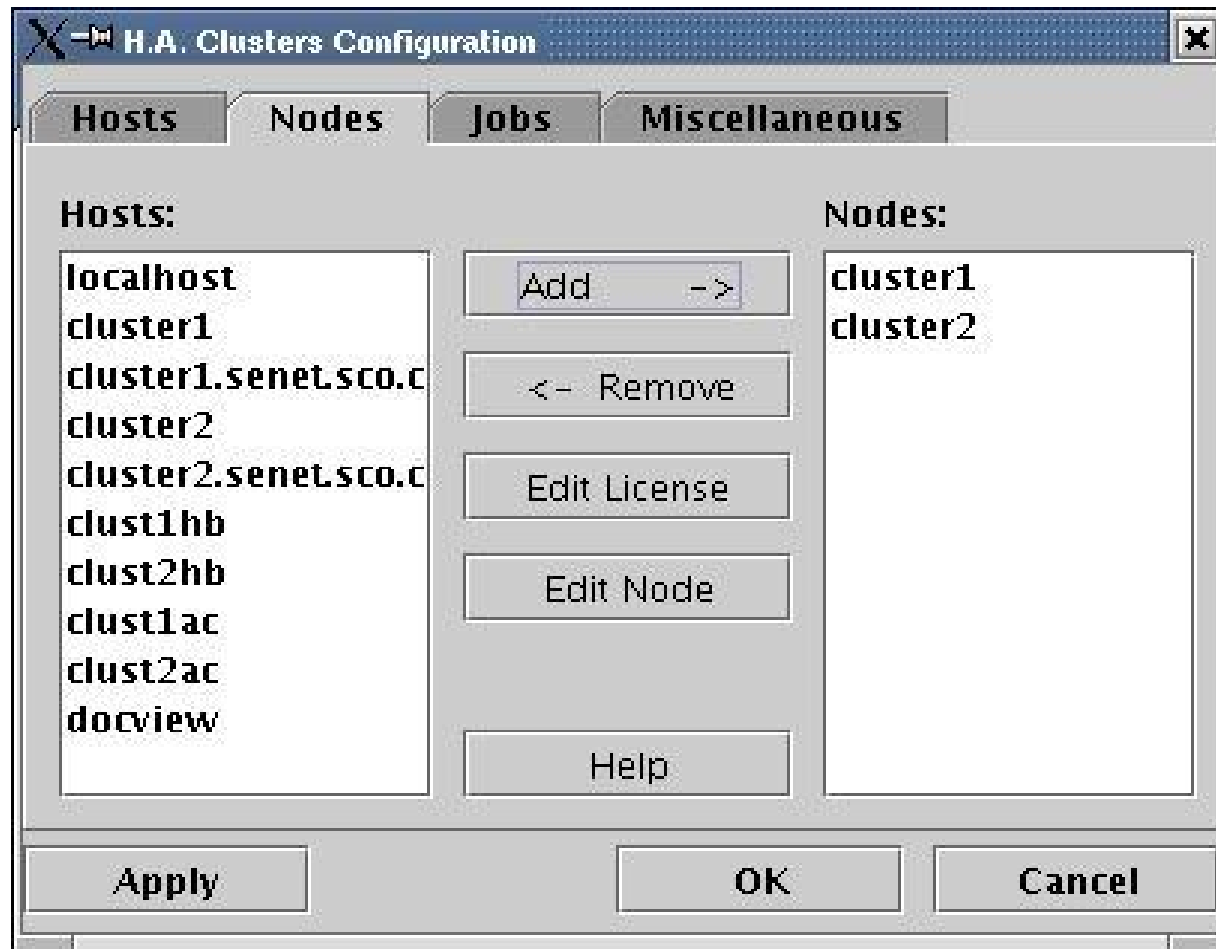
**Cluster Operations:**

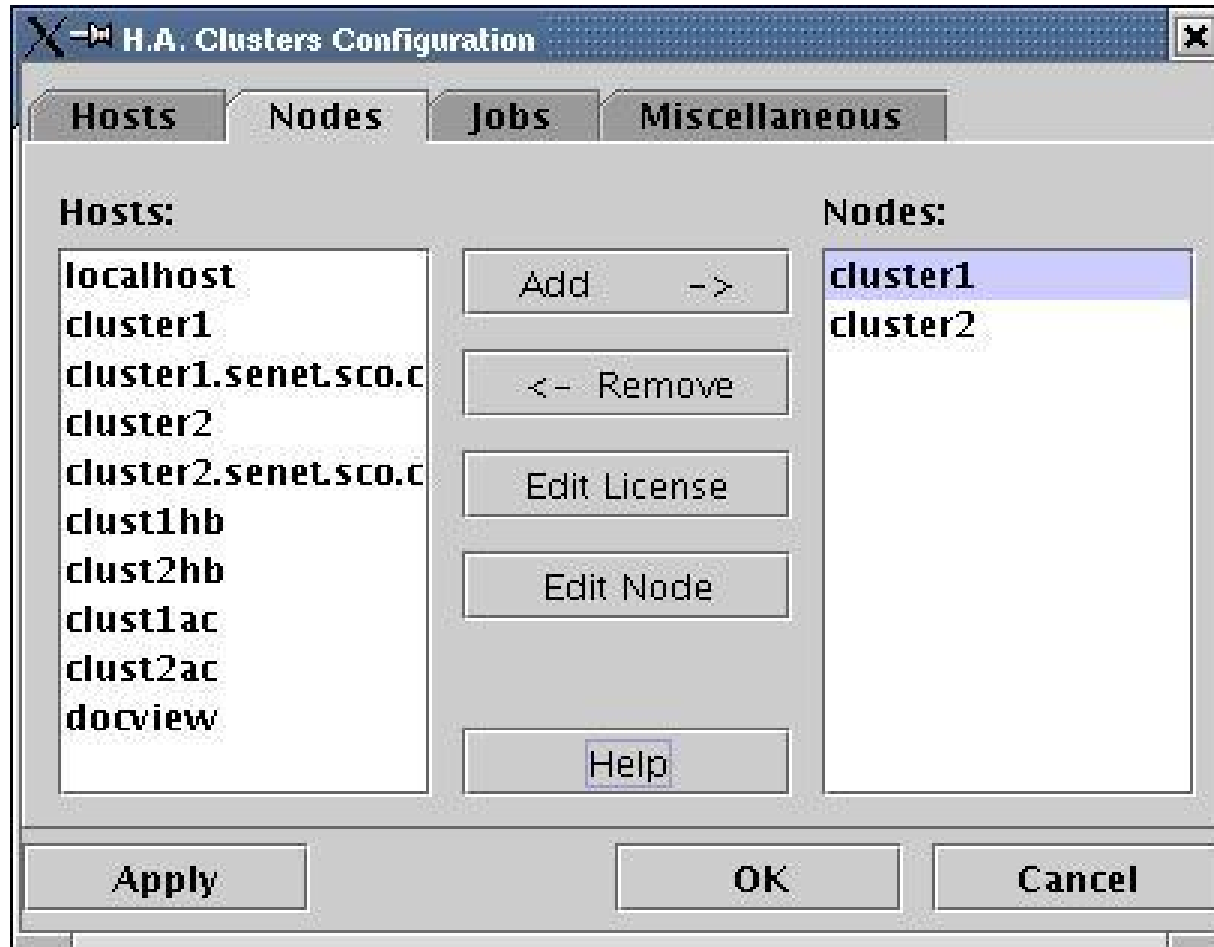
- Display Status



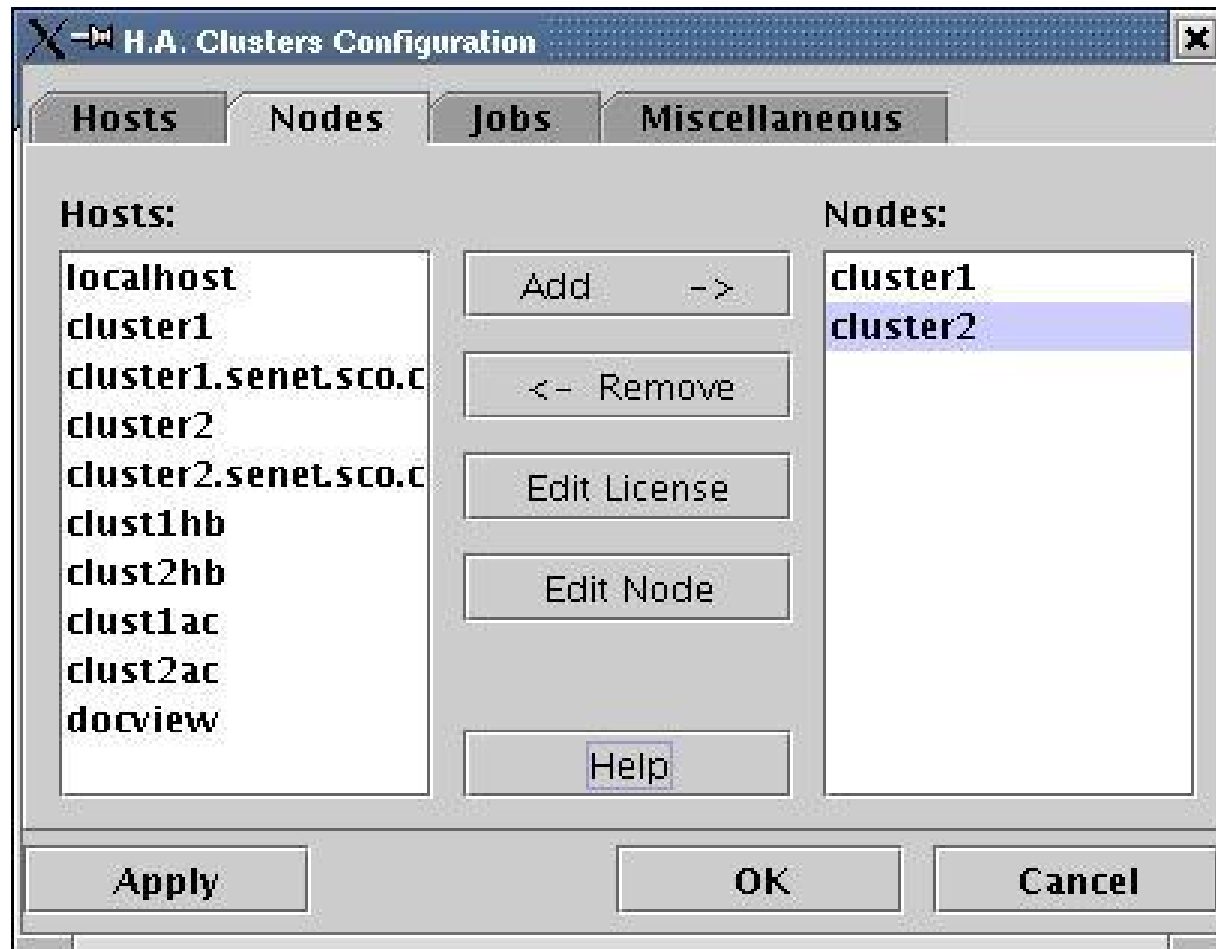














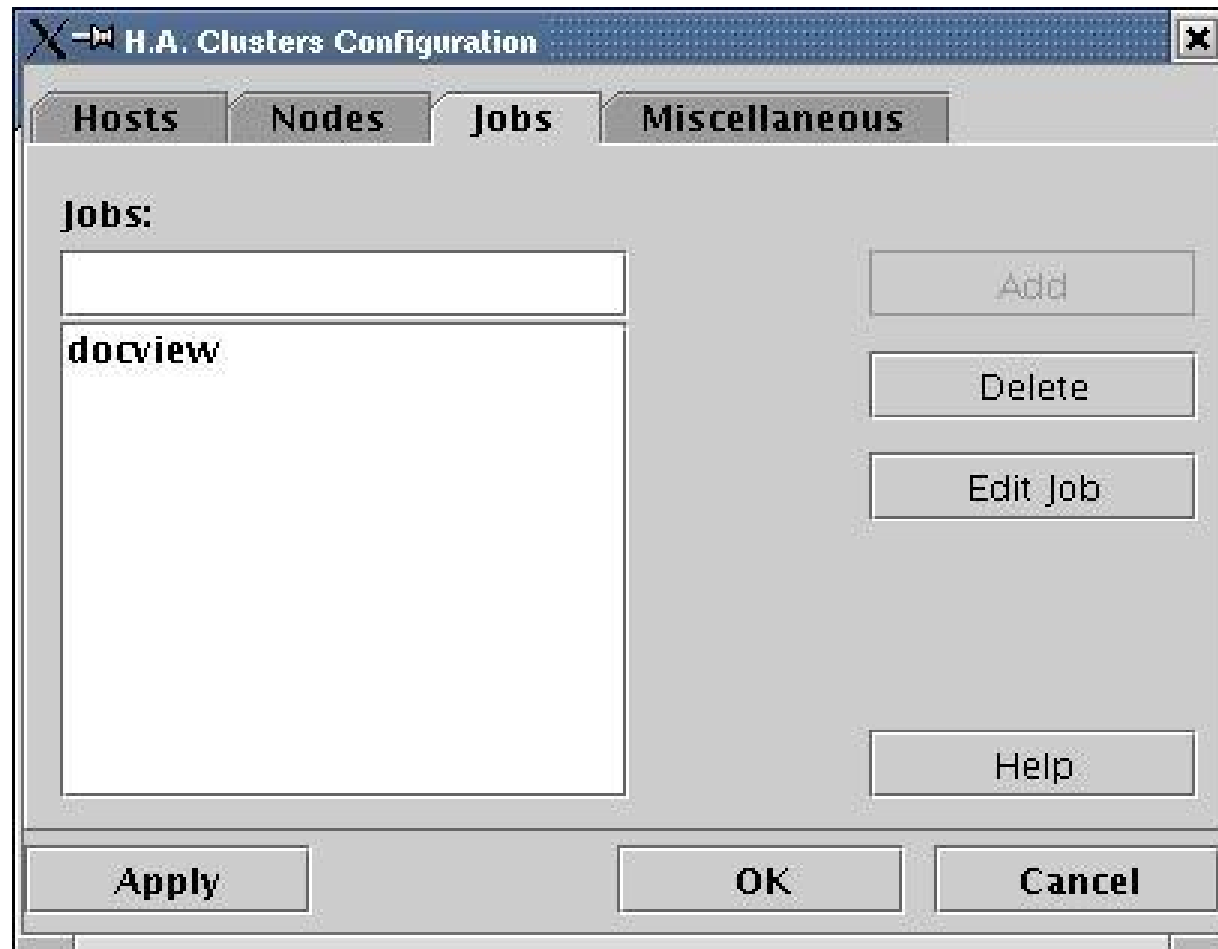
**H.A. Clusters Configuration - Edit Node**

**Node Name:** cluster2

Interfaces:	IP Labels:	Net Masks:	
	localhost		Add
net0	cluster2	255.255.255.224	Delete
net1	clust2hb	255.255.255.0	
net0:0	clust2ac	255.255.255.224	

**Heart Beat:** net1

Help      OK      Cancel





**H.A. Clusters Configuration - Edit Job**

**Job Name:** docview

**Active** | Standby | Options

**Active Node:** cluster1

**Active Interface:** net0:0

**Active IP Label:** docview

**Active Net Mask:** 255.255.255.224

**Active Shared Disk:**

Help OK Cancel



**H.A. Clusters Configuration - Edit Job**

Job Name: **docview**

**Active** | **Standby** | **Options**

Standby Node:

Standby Interface:

Standby Shared Disk:

**Help**      **OK**      **Cancel**





**H.A. Clusters Configuration - Edit Job**

**Job Name:** docview

**Active** | **Standby** | **Options**

**NFS Support:** no

**Mount Point:**

**Automatic Job Recovery:** ---

**Help**      **OK**      **Cancel**



**H.A. Clusters Configuration**

**Hosts** | **Nodes** | **Jobs** | **Miscellaneous**

Async Rate:

Alive Check Time:

Device Check Time:

Sync Disk Time:

Display Trace: --- ▼

Check LAN: --- ▼

Check Disk: --- ▼

Help

Apply      OK      Cancel





## Copy files to cluster2



- Copy the following files over to cluster2 from cluster1
  - /usr/HA/ha\_file/config.ha
  - /usr/HA/ha\_file/docview\_start
  - /usr/HA/ha\_file/docview\_stop
  - /etc/hosts



```
216.250.132.20 - PuTTY
#####
#      Job Definition      #
#####
#
JOB_NAME=docview
# This is added to cluster 1 config.ha file
#
##### Job Number: 1
JOB=docview
#
ACT_NODE=cluster1
ACT_LAN=net0:0
ACT_IP=docview
STANDBY_NODE=cluster2
STANDBY_LAN=net0:0
SWITCH_BACK=yes
ACT_NETMASK=255.255.255.224
ORIGINAL_HOST=cluster1
#
#####
#      Misc. Definition    #
#####
#
```

This is the config.ha file from cluster1. The config.ha file from cluster2 would show cluster2 as the value.



**H.A. Clusters Console**

File Help

**Target Node:**  
cluster1

**Target Job:**  
docview

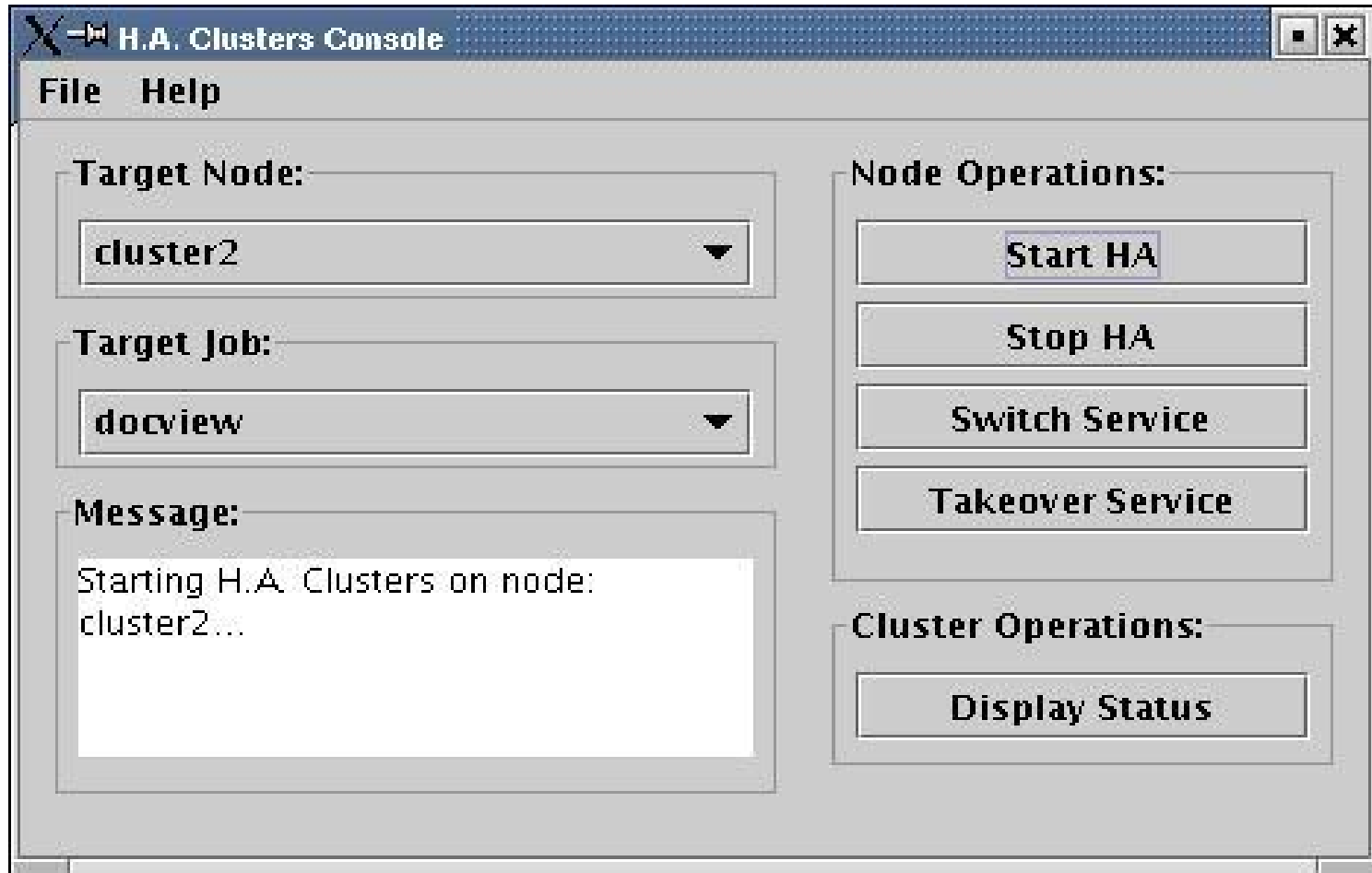
**Message:**  
Starting H.A. Clusters on node:  
cluster1...

**Node Operations:**

- Start HA
- Stop HA
- Switch Service
- Takeover Service

**Cluster Operations:**

- Display Status





# IP Address showing job is running on cluster1



```
216.250.132.20 - PuTTY
bash-3.1# ifconfig -a
lo0: flags=4049<UP,LOOPBACK,RUNNING,MULTICAST> mtu 16384
    inet 127.0.0.1 netmask ff000000
    inet/perf: rcv size: 49152; send size: 49152; full-size frames: 1
    inet/options: -rfc1323
net0: flags=4043<UP,BROADCAST,RUNNING,MULTICAST> mtu 1500
    inet 216.250.132.20 netmask fffffffe0 broadcast 216.250.132.31
    inet/perf: rcv size: 24576; send size: 24576; full-size frames: 1
    inet/options: rfc1323
    ether 00:02:a5:ab:19:4f
    (alias) inet 216.250.132.22 netmask fffffffe0 broadcast 216.250.132.31
net1: flags=4043<UP,BROADCAST,RUNNING,MULTICAST> mtu 1500
    inet 192.168.1.10 netmask fffffff0 broadcast 192.168.1.255
    inet/perf: rcv size: 24576; send size: 24576; full-size frames: 1
    inet/options: rfc1323
    ether 00:50:04:84:9d:03
bash-3.1#
```

# IP showing active IP running on cluster2



```
216.250.132.21 - PuTTY
bash-3.1# hostname
cluster2.senet.sco.com
bash-3.1# ifconfig -a
lo0: flags=4049<UP,LOOPBACK,RUNNING,MULTICAST> mtu 16384
    inet 127.0.0.1 netmask ff000000
    inet/perf: rcv size: 49152; send size: 49152; full-size frames: 1
    inet/options: -rfc1323
net0: flags=4043<UP,BROADCAST,RUNNING,MULTICAST> mtu 1500
    inet 216.250.132.21 netmask fffffffe0 broadcast 216.250.132.31
    inet/perf: rcv size: 24576; send size: 24576; full-size frames: 1
    inet/options: rfc1323
    ether 00:02:a5:ca:89:7a
    (alias) inet 216.250.132.16 netmask fffffffe0 broadcast 216.250.132.31
net1: flags=4043<UP,BROADCAST,RUNNING,MULTICAST> mtu 1500
    inet 192.168.1.20 netmask fffffff00 broadcast 192.168.1.255
    inet/perf: rcv size: 24576; send size: 24576; full-size frames: 1
    inet/options: rfc1323
    ether 00:50:da:18:34:29
bash-3.1#
```

# Failover IP address for job on cluster2



```
216.250.132.21 - PuTTY
bash-3.1# hostname
cluster2.senet.sco.com
bash-3.1# ifconfig -a
lo0: flags=4049<UP,LOOPBACK,RUNNING,MULTICAST> mtu 16384
    inet 127.0.0.1 netmask ff000000
    inet/perf: rcv size: 49152; send size: 49152; full-size frames: 1
    inet/options: -rfc1323
net0: flags=4043<UP,BROADCAST,RUNNING,MULTICAST> mtu 1500
    inet 216.250.132.21 netmask fffffffe0 broadcast 216.250.132.31
    inet/perf: rcv size: 24576; send size: 24576; full-size frames: 1
    inet/options: rfc1323
    ether 00:02:a5:ca:89:7a
    (alias) inet 216.250.132.22 netmask fffffffe0 broadcast 216.250.132.31
net1: flags=4043<UP,BROADCAST,RUNNING,MULTICAST> mtu 1500
    inet 192.168.1.20 netmask fffffff00 broadcast 192.168.1.255
    inet/perf: rcv size: 24576; send size: 24576; full-size frames: 1
    inet/options: rfc1323
    ether 00:50:da:18:34:29
bash-3.1#
```

# Switch Back Mode



```
216.250.132.20 - PuTTY
#####
#           Job Definition           #
#####
#
JOB_NAME=docview
# This is added to cluster 1 config.ha file
#
##### Job Number: 1
JOB=docview
#
ACT_NODE=cluster1
ACT_LAN=net0:0
ACT_IP=docview
STANDBY_NODE=cluster2
STANDBY_LAN=net0:0
SWITCH_BACK=yes
ACT_NETMASK=255.255.255.224
ORIGINAL_HOST=cluster1
#
#####
#           Misc. Definition         #
#####
#
```

# IP Address Failing Back When Server Online



```
216.250.132.21 - PuTTY
bash-3.1# hostname
cluster2.senet.sco.com
bash-3.1# ifconfig -a
lo0: flags=4049<UP,LOOPBACK,RUNNING,MULTICAST> mtu 16384
    inet 127.0.0.1 netmask ff000000
    inet/perf: rcv size: 49152; send size: 49152; full-size frames: 1
    inet/options: -rfc1323
net0: flags=4043<UP,BROADCAST,RUNNING,MULTICAST> mtu 1500
    inet 216.250.132.21 netmask fffffffe0 broadcast 216.250.132.31
    inet/perf: rcv size: 24576; send size: 24576; full-size frames: 1
    inet/options: rfc1323
    ether 00:02:a5:ca:89:7a
    (alias) inet 216.250.132.16 netmask fffffffe0 broadcast 216.250.132.31
net1: flags=4043<UP,BROADCAST,RUNNING,MULTICAST> mtu 1500
    inet 192.168.1.20 netmask fffffff00 broadcast 192.168.1.255
    inet/perf: rcv size: 24576; send size: 24576; full-size frames: 1
    inet/options: rfc1323
    ether 00:50:da:18:34:29
bash-3.1#
```



- For up to date information see:
- [www.sco.com/products/clustering](http://www.sco.com/products/clustering)

# Get Your Passport Stamped



- Be sure to get your Passport stamped.
  - Get your passport stamped
    - By breakout session instructors
    - By exhibitors in the exhibit hall
  - Turn in your Passport
    - After the last breakout session on Wednesday
    - Drawing for great prizes for Wrap-up Session
- Remember to complete the breakout session evaluation form, too

**WIN BIG**

SCO Forum 2006  
PASSPORT

Turn in this card at the Registration and Information desk. Prize drawings will be held during the Closing Session of SCO Forum, at 4pm on Tuesday, August 9th. You must be present to win.

**HOW**

- > Attend
- > Visit
- > Have

Attend a drag iPods

Name: \_\_\_\_\_

Company: \_\_\_\_\_

eMail: \_\_\_\_\_

Phone: \_\_\_\_\_

**Breakout Sessions**

Monday: ○ ○ ○

Tuesday: ○ ○ ○

**Tradeshow**

○ ○ ○ ○ ○

○ ○ ○ ○ ○