



Intel® Modular Server™

Rich Aikman

Product Marketing Engineer

Q4, 2008

Agenda

1. Positioning
2. System, Server and Subsystems
3. Product Updates



What is the Intel® Modular Server?

The Intel® Modular Server built on Intel® Multi-Flex Technology is:

Simple. Enjoy **one integrated system** with point and click management

Flexible. Increase capacity on **demand** with hot swappable compute and storage capabilities

An exceptional value. Lower your costs with a server designed to fit your budget with many high-end features accessible to your business



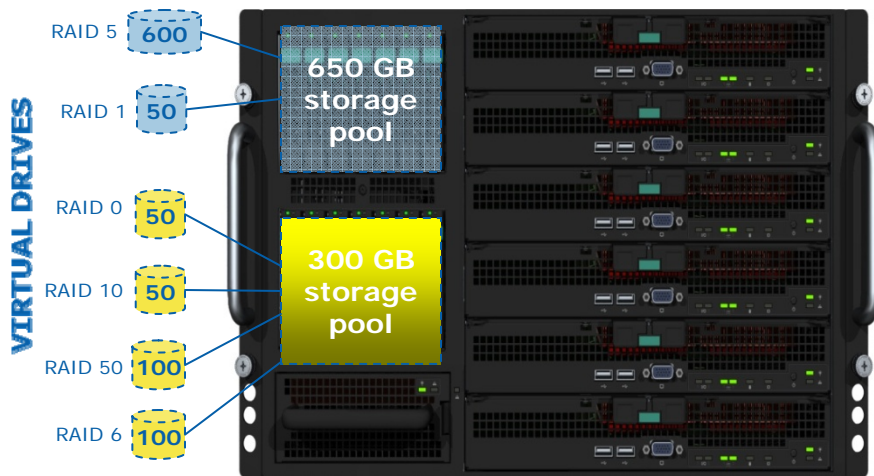
Simplicity

The screenshot displays the Intel Modular Server Control web interface. The top navigation bar includes the Intel logo, the title 'Modular Server Control', and the tagline 'Built on Intel® Multi-Flex Technology'. On the right side of the bar, it shows 'Current user: admin' and a 'Log off' button. Below the bar are tabs for 'Dashboard', 'Chassis Front', 'Chassis Back', 'Storage', and 'Events'. A left-hand navigation menu lists categories like System, Servers, Storage, Switches, Reports, Settings, and Dev, with sub-items such as Storage Layout, Events, Dashboard, Diagnostics, IP Configuration, Date/Time, SNMP, Users, Event Policies, Notification, and Firmware. The main content area features a 3D view of a server rack with a 'view back' button. To the right of the rack are two action panels: 'Server 1' Actions (Power On, Remote KVM & CD, Identify) and 'Server Help' (Get Help). Below the rack view are tabs for 'General', 'Detail', 'Events', 'Sensors', and 'Virtual Drives'. The 'General' tab is active, showing a 'Product Data' table.

Property	Value
Status	OK, OFF
Remote KVM	No session is active
Remote Serial Console	No session is active
Product Name	Server Compute Module
Manufacturer	Intel Corporation
Manufacture Date	2007-08-26 06:21:10 PM
Part Number	D70725-402
Serial Number	BZSI73400247
Asset Tag	
Management Firmware Version	1.19.1
Management FW Boot Version	0.9
BIOS Version	Unable to read the BIOS version; Power On may be required.

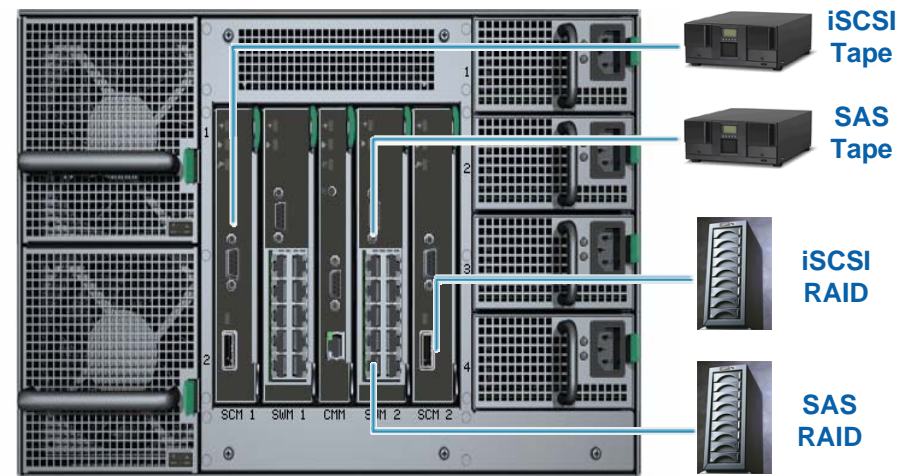
Flexibility

Virtualized storage reduces hardware costs and provides maximum flexibility.



Consolidated storage reduces hard disk drives cost, count and flexibility

- No drives on the server
- Storage shared all servers using virtual drives
- Hardware RAID 0, 1, 5, 6, 10, 50









Flexible storage expansion:

- External SAS or iSCSI arrays
- Support access to SAS or iSCSI tape drives



Exceptional Value

<p>3x RAID HBA w/ Battery Backup  \$1,550*</p> <p>1x SR1500ALSAS**  \$1,140*</p> <p>1x SR1500ALSAS**  \$1,140*</p> <p>1x SR1500ALSAS**  \$1,140*</p> <p>9x 73GB SAS 10K HDD  \$1,900*</p> <p>1x 8-port GbE Mgd. Switch (Linksys)  \$230*</p>	<p>Capability</p> <p><</p>	<p>Configuration:</p> <ul style="list-style-type: none"> 3x Compute modules 1x GbE Switch (24-port w/1x 10Gb inter-sw link) 1x SAS Storage Controller 1x Mgmt. Module 4x 146GB SAS HDD (same storage capacity) <p>Additional capabilities included:</p> <ol style="list-style-type: none"> 1. Virtual Presence GUI 2. Ease of Use Mgmt. Features 3. Remote OOB mgmt. 4. Virtualized Access Storage 5. Shared storage 6. Server fail over
<p>\$7,100*</p>	<p>Cost</p> <p>=</p>	<p>\$7,080*</p>

**SR1500ALSAS: Alcolu/Dowling 2 SAS 1U integrated platform.

Answer: Anyone purchasing 2 -3x 1u rack or pedestal servers

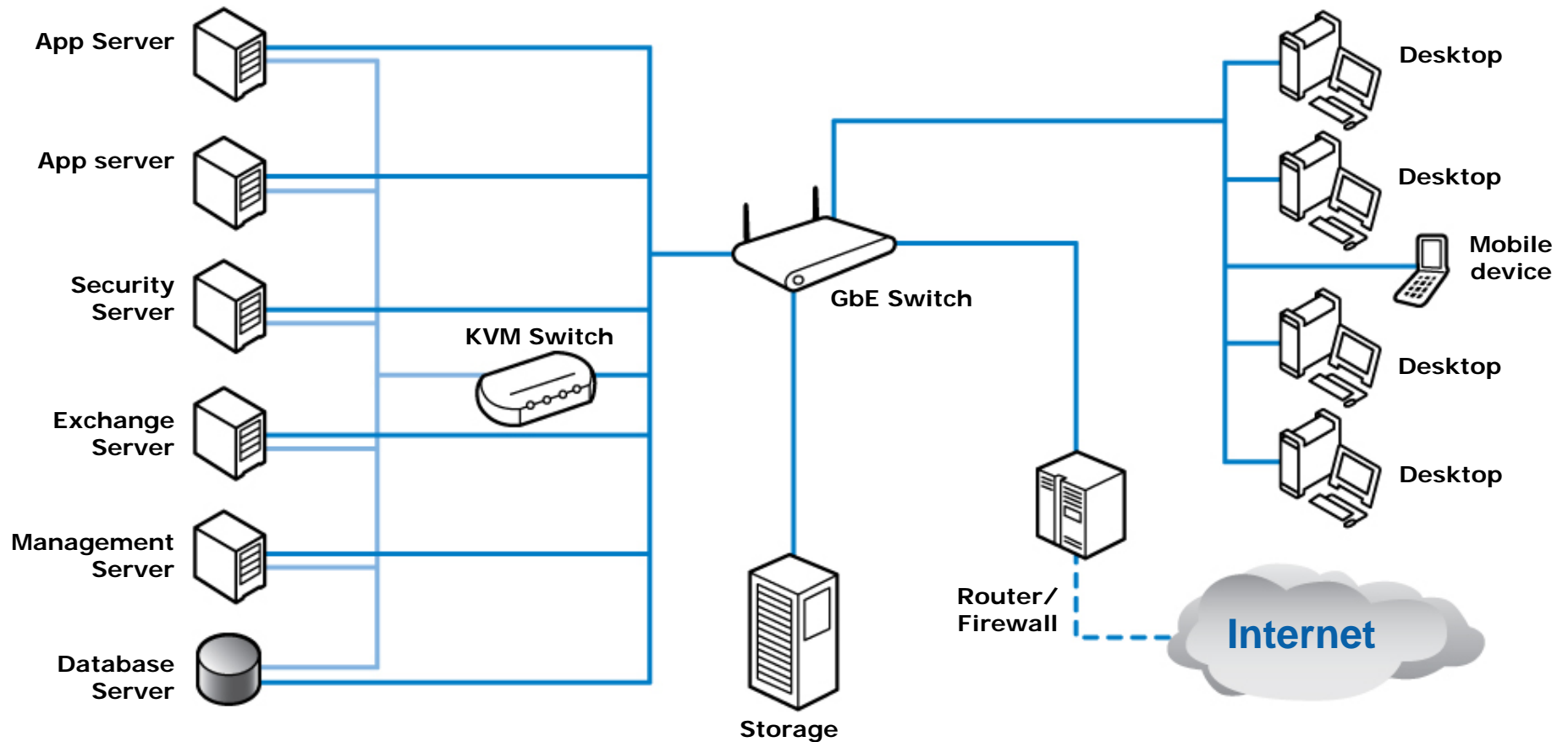
* - Indicative Disti price to a Reseller only, please check with your disti. for actual price

Note: CPU & Memory not included



It's a business in a box.

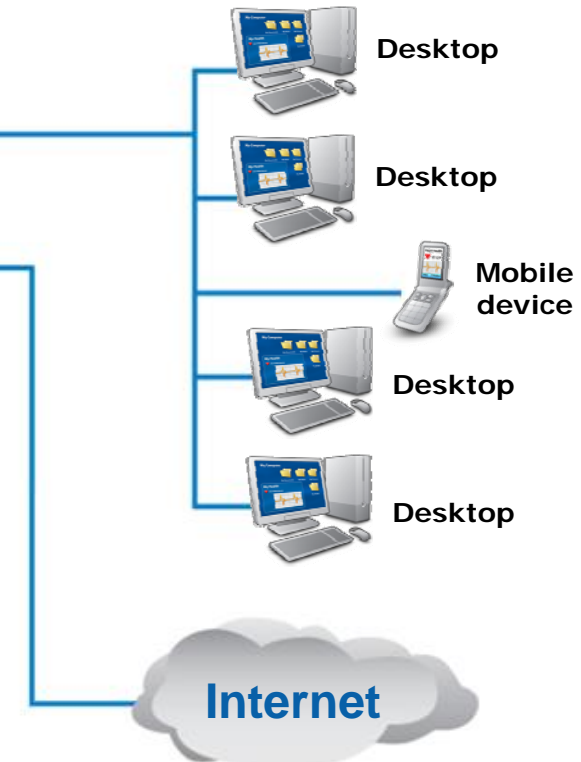
Imagine taking your customers from this:





It's a business in a box.

To this:



Intel® Modular Server built on Intel® Multi-Flex Technology:

**More features. One box.
Manageability. Agility. Scalability.
And benefits you can measure!**



Intel® Modular Server System

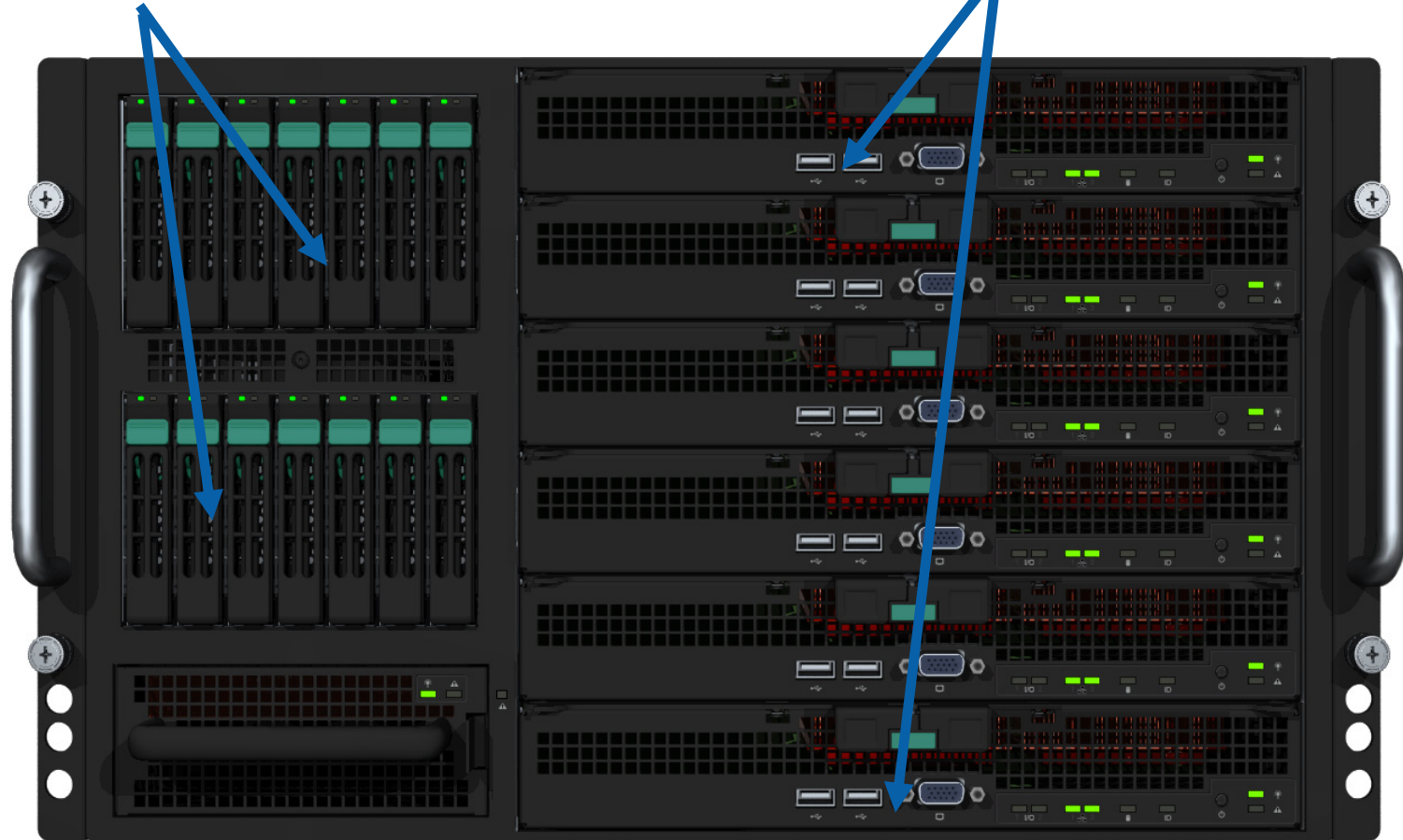
- 6U rack / pedestal based
- Front of chassis
 - 6 Compute Module slots
 - Disk Storage Bay
 - 14 - 2.5" SAS drive bay
 - or
 - 6 - 3.5" SATA drive bay
 - 1 hot swap I/O fan module
- One midplane
 - Interface for major system components
- Rear of chassis
 - 1 Management Module Slot
 - 2 Switch Module slots
 - 2 Storage Module Slots
 - 4 hot swap Power Supply Module slots
 - 2 hot swap fan modules



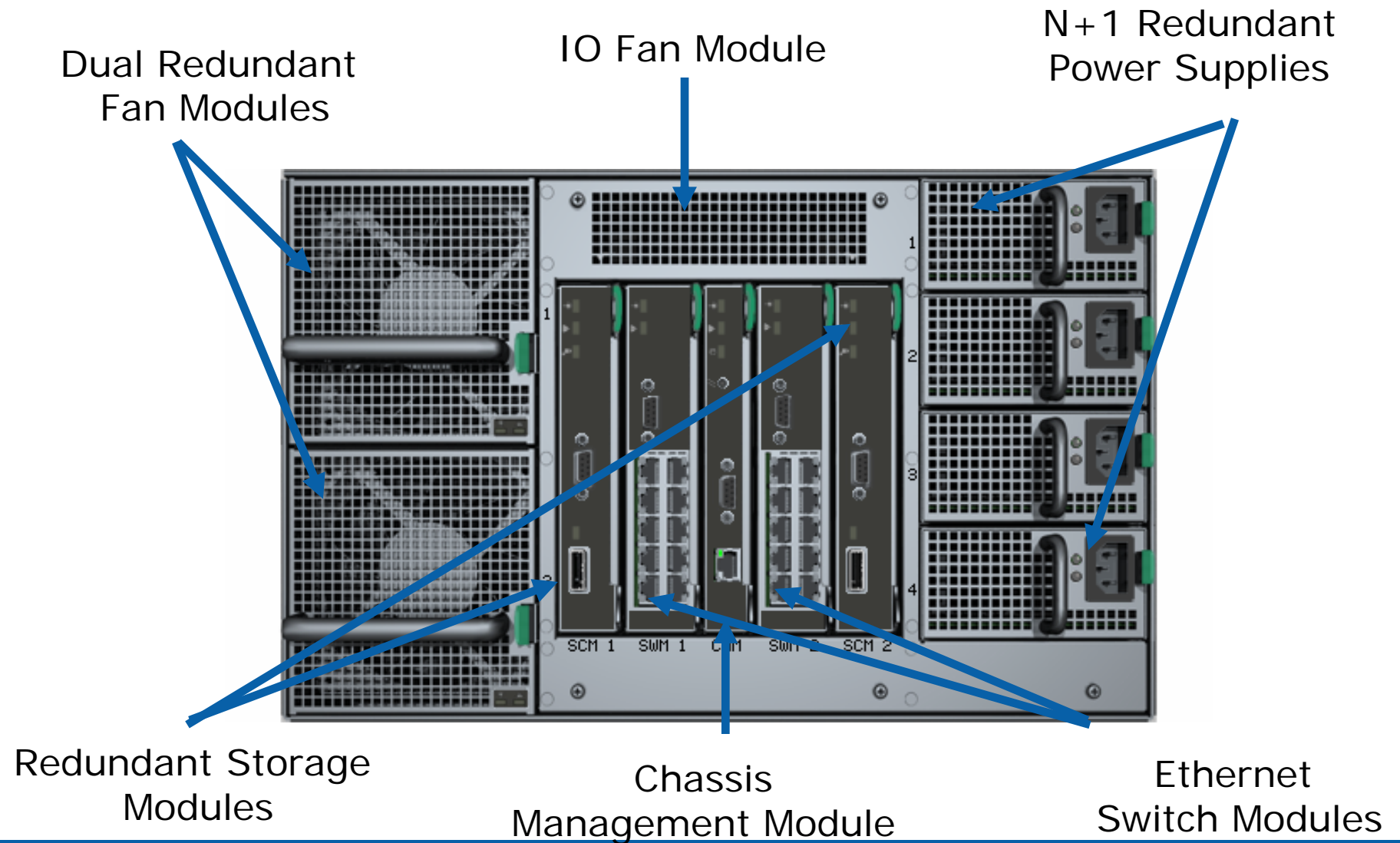
Intel® Modular Server

14 2.5" SAS Drives

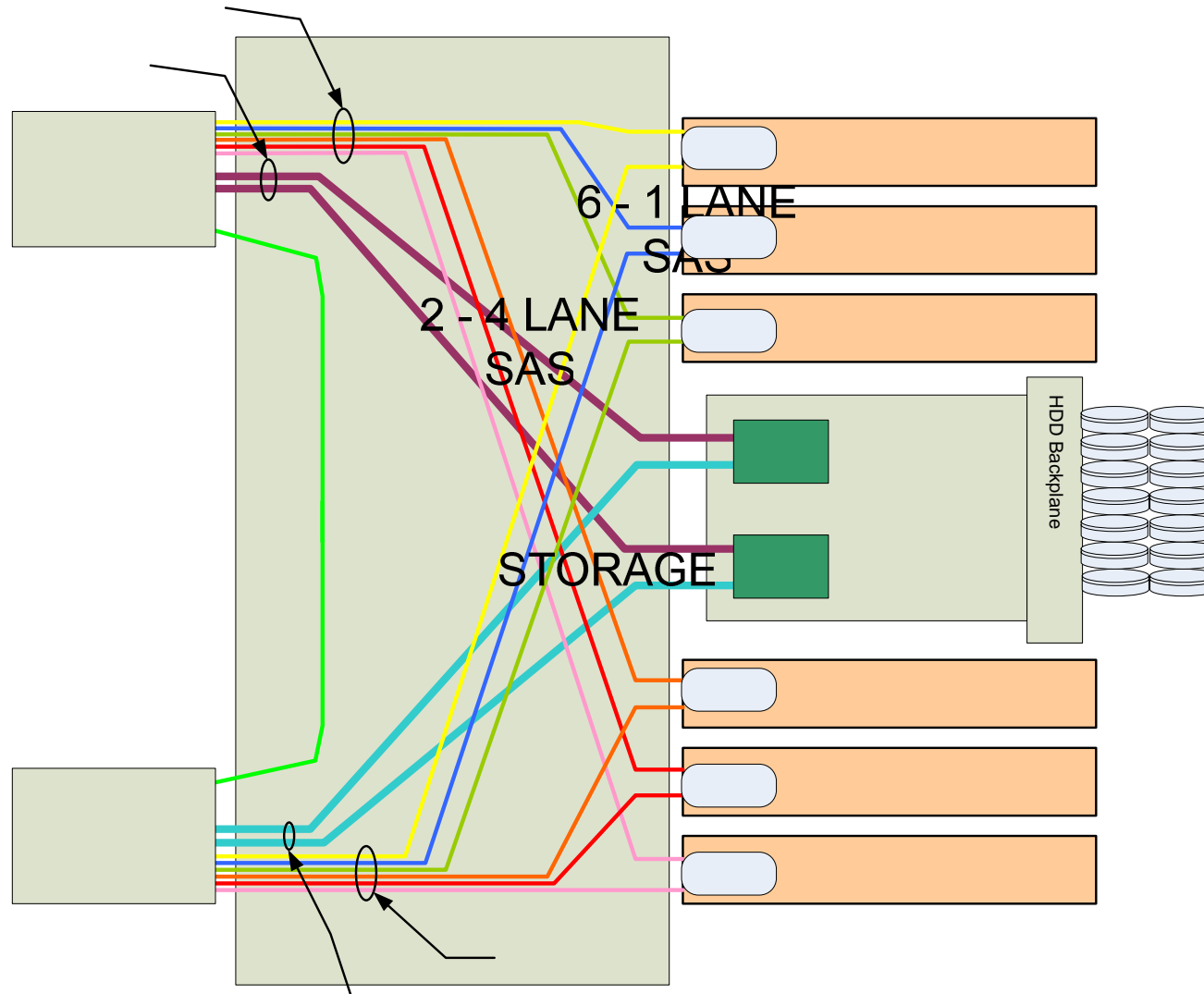
6 Compute Modules



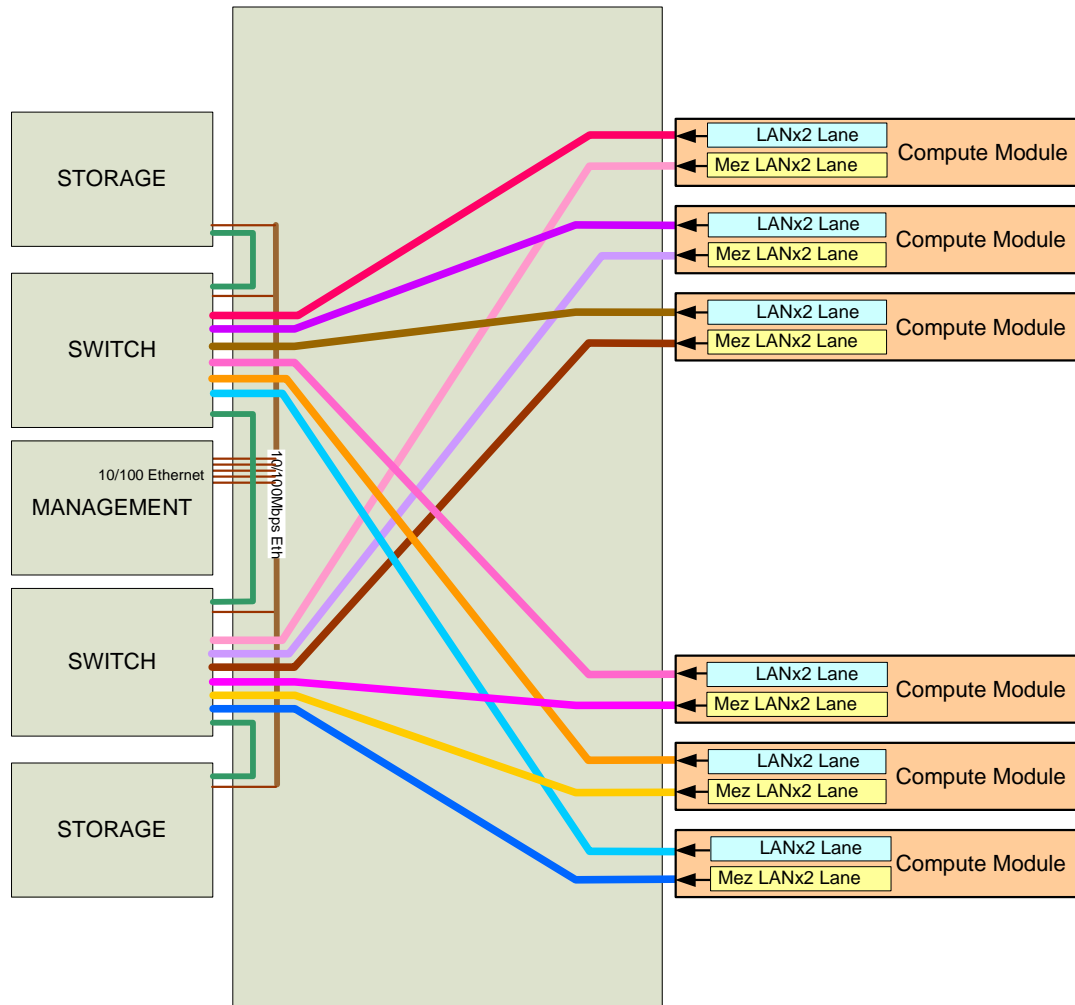
Intel® Modular Server System



Intel® Modular Server - SAS Connections



Intel® Modular Server - Ethernet Connections



Intel® Compute Module

One or two Dual-Core Intel® Xeon® 5100, 5200 Quad-Core Intel® Xeon® 5300, 5400 series processors, 1333/1066MHz FSB

512MB, 1GB, 2GB, or 4GB ECC FBD DIMMs (DDR2-667) memory, Maximum 32GB, Intel® x4 Single Device Data Correction (x4 SDDC)

Entirely Diskless

Intel® 5000 series Chipset

Integrated LSI 1064E SAS Controller

Integrated remote KVM, remote media and remote console

Integrated Dual Gigabit Ethernet

Optional Dual 1Gb Ethernet Mezzanine Card

400W power budget



Yesterday's Answer:

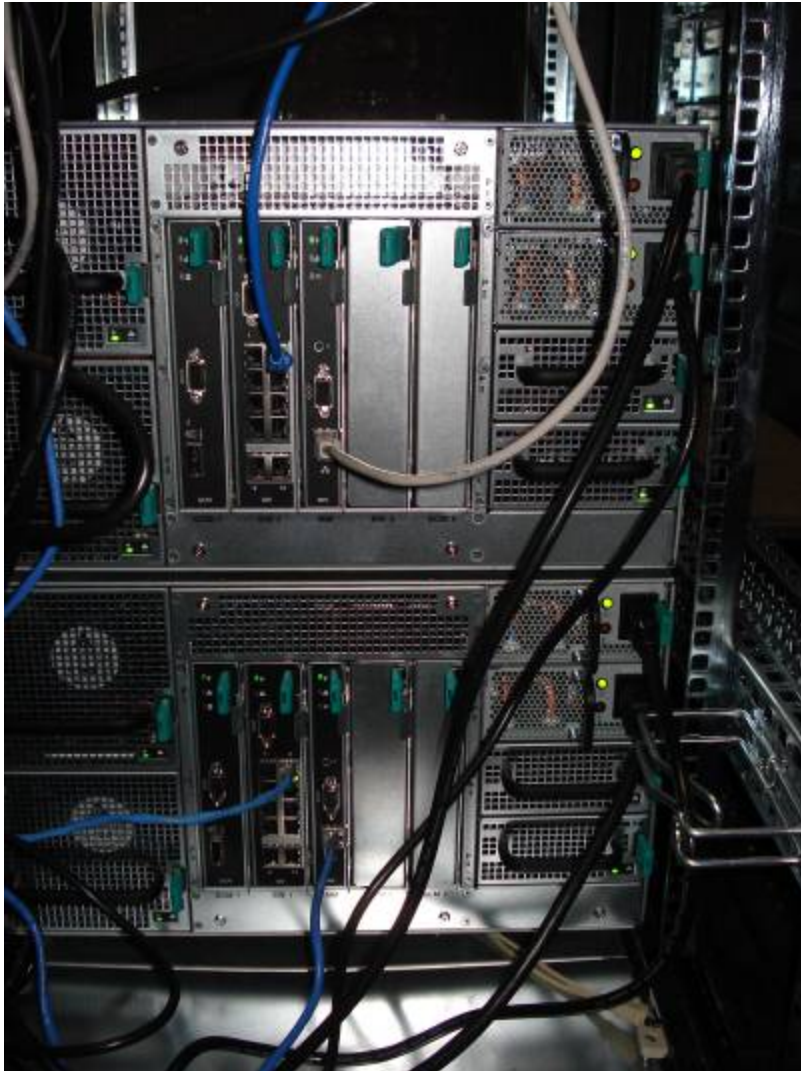


- **Complicated**
- **Expensive**
- **Job Security¹**

1: Rat's nest hand cuffs.



Today's Answer



- **Simple**
- **Flexible**
- **Exceptional Value**
- **Job Security¹**

1: Deliver innovative solutions.



Quiet

70dB Fully Loaded

- Same as 1 Intel 1u rack server
- 6x 1u rack servers produces 5-12db more noise roughly 100% more noisy
- Quiet kit reduces noise by ~10db

Updates

Product Test Drive

Like what you see? Are you ready to take it out for a spin? Here's your chance. Simply click on the schedule link to reserve time to remotely access a live system!

Schedule time at

<http://app852.cmpnet.com/clearbay-marketing/>

Login: **Demo Admin**

Password: **pass-m**

Enter your email address; it's where your reservation information will be sent.



Sales & Marketing Resource

<http://www.intelmodularserver.com>

Updated with New Content:

- Product Test Drive
- Video Demos
- Video Training
- Images
- Reseller & Partner Testimonials
- Benchmark Data



Certified Solution Platform

VirtualIron™

Novell.



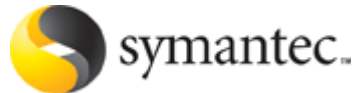
EMC²
where information lives

spike
ADTECH

CLEARPointe

open-e

Parallels™



CommuniGate
SYSTEMS

Quantum.

CITRIX®

MySQL

FalconStor
Software

NetApp®
Simplifying Data Management

ORACLE®

DataCore™
SOFTWARE

Microsoft®



Intel and the Intel logo are trademarks or registered trademarks of Intel Corporation or its subsidiaries in the United States and other countries. Other names and brands may be claimed as the property of others. All products, dates, and figures are preliminary and are subject to change without any notice. Copyright © 2007, Intel Corporation.



Solution Resource – ESAA

<http://www.intel.com/go/ESAA>

Free to join and provides access to hundreds of certified solution recipes

- Oracle 10g
- SQL & Linux
- Symantec Backup & Security
- VMware ESX

Enterprise Solution Acceleration Alliance (ESAA)



Intel Modular Server



- **Simple**
- **Flexible**
- **Exceptional Value**

Intel and the Intel logo are trademarks or registered trademarks of Intel Corporation or its subsidiaries in the United States and other countries. Other names and brands may be claimed as the property of others. All products, dates, and figures are preliminary and are subject to change without any notice. Copyright © 2007, Intel Corporation.





Intel and the Intel logo are trademarks or registered trademarks of Intel Corporation or its subsidiaries in the United States and other countries. Other names and brands may be claimed as the property of others. All products, dates, and figures are preliminary and are subject to change without any notice. Copyright © 2006, Intel Corporation.

